



## Ponteland Cows and Sheep



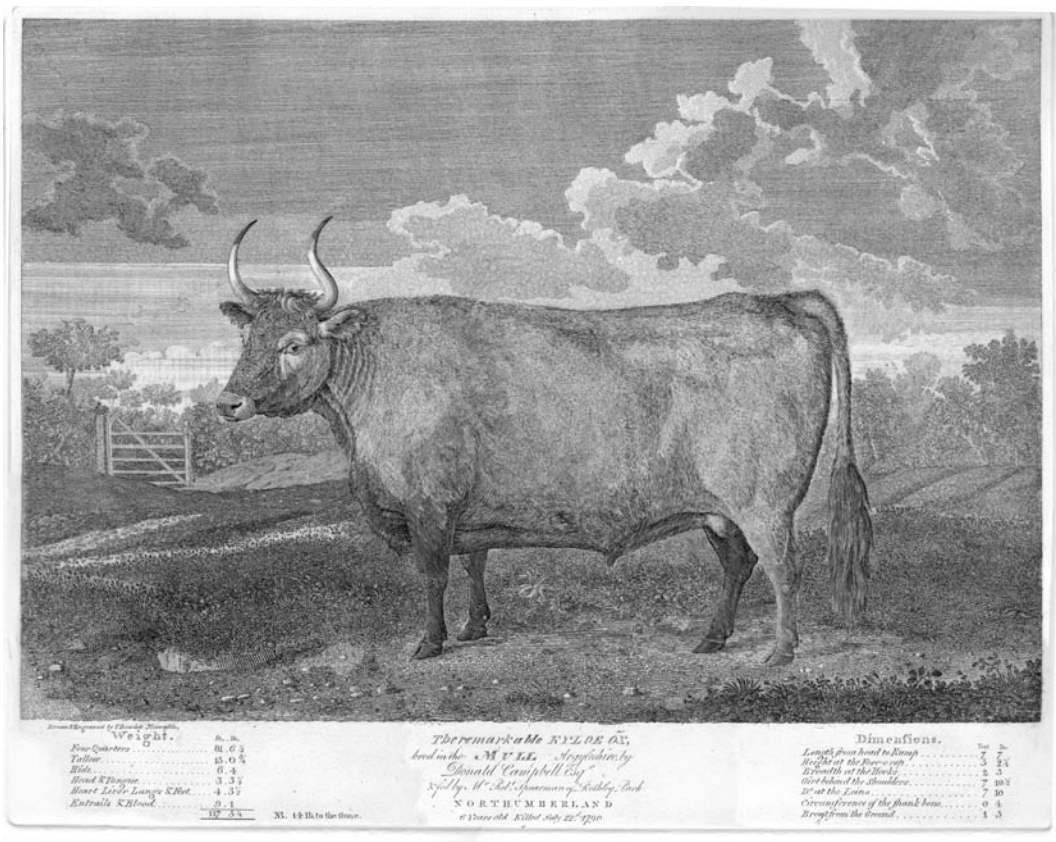
In 2006 I was commissioned by Bett Homes and Commissions North to create an artwork for a new housing development in Ponteland Northumbria.

The site was the old lairage - the place where sheep and cattle were rested after traveling to market and before their sale.

The new building site was separated from the (still functioning) abattoir by a high brick wall. I thought it appropriate that the new residents of the site were reminded of the older ones. I was also very interested to explore how viewers would respond to life size cows and sheep in printed blue on porcelain – we are used to them being miniaturized and domestic in scale featuring on our printed tableware.

The foliage on which the cows and sheep lie and graze was generated by digitally cloning and collaging details from Thomas Bewick's copper

plate engraving *The Kyloe Ox* from Cherryburn<sup>1</sup>, Bewick's birthplace in Northumberland.



Paul Scott, December 2006



Paul Scott, *Cumbrian Blue(s)*, 2 Holly Cottages, Blencogo, Wigton, Cumbria, CA7 OBZ, England.  
Tel: + 44 16973 61706, M: +44 7775 680938  
e: [cumbrianblues@mac.com](mailto:cumbrianblues@mac.com)  
[www.cumbrianblues.com](http://www.cumbrianblues.com)

<sup>1</sup> National Trust property - [www.nationaltrust.org.uk/cherryburn](http://www.nationaltrust.org.uk/cherryburn), home of The Bewick Society  
[www.bewicksociety.org](http://www.bewicksociety.org)